

AUTOVEND V2 INSTALLATION MANUAL



AUTOVEND INSTALLATION MANUAL

INTRODUCTION

The Unicorn Autovend is an automatic coin operated battery-electric vending dispenser, available in two columns with either a powder painted steel or stainless steel cover. Stock columns are set during manufacture for the designated stock packet size.

For either column, insertion of the correct coin(s) energises a motor to deliver automatically the pack (**no buttons have to be pressed to dispense**) and drop the coins into the cash box. If no stock is present the system remains dormant and pressing the refund button returns all held coins.

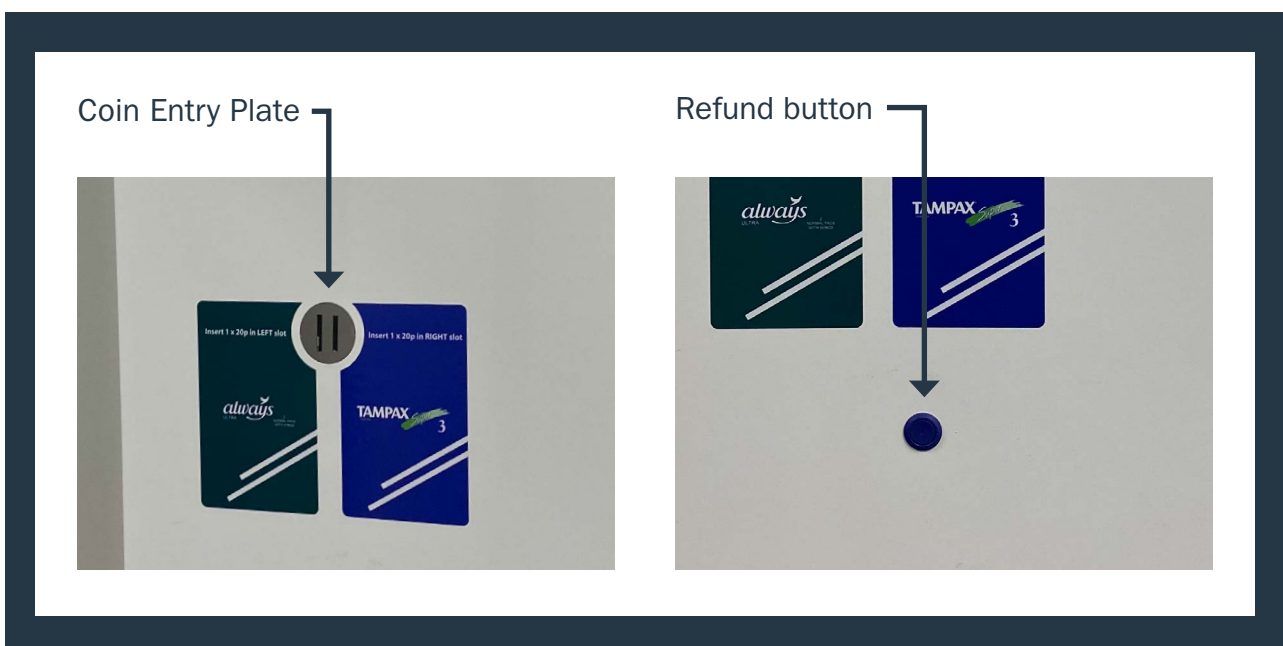
OPERATION MECHANISM

Coins enter in the dispenser through a Coin Entry Plate fitted to the cover. This limits the coins entered to the maximum diameter and thickness of the designated coin.

The coin sorter (C/S) is fixed during manufacture to reject coins of diameter less than the target coin type.

ATTENTION: The setting for the number of coins in a vend can be adjusted in the range 1 to about 4 (depending on diameter) by re-positioning the coin contact spring to detect the 'last coin' in the vend at a greater or lesser height in the coin track.

Coins accepted and held in the C/S may be refunded by pressing the **Refund Button** on the fascia of the machine. Refunded or non-accepted coins fall directly into the appropriate product chute at the base of the machine for easy retrieval.



INSTALLATION STEP BY STEP

1. COMPONENTS

1.1. Intallation kit



Four screws (4cm)



One screw (8mm)
Do not use in the Autovend



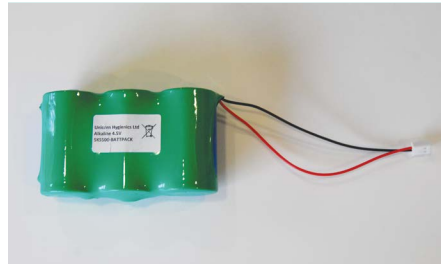
Four washers



Four screw plugs



One key



Power battery pack



Cash box

1.2. Useful tools

- Optional spare screw to help with the installation
- Spirit level
- Pozidriv#1 screwdriver – preferably magnetised
- 3mm (1/8") flat blade screwdriver
- Engineers and Fine nosed pliers



2.1.



2.2.



2.3.

2. INSTALLATION

2.1. Using a spare screw (not provided in the installation kit), drill it into the wall at the height you would like the machine to be placed.

2.2. Sit the machine on the screw by using the square hole between the two columns (shown in the picture). This will keep the machine hung up on the wall during the installation.

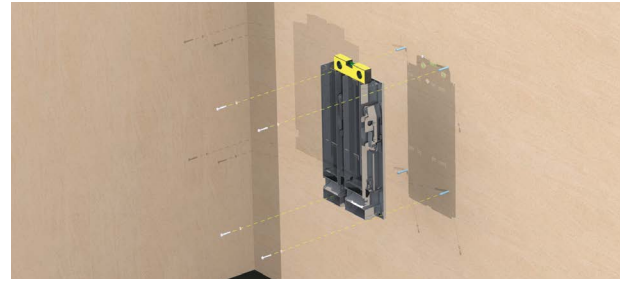
2.3. By using an spirit level, ensure the machine is straight and then mark the four fixing holes in order to indicate where you are subsequently going to drill.

2.4. Remove the Autovend in order to drill the four holes by using Pozidriv#1 screwdriver and then fit the screw plugs in.

2.5. Hang the Autovend back on the wall and then fit the washers and the screws into each marked holes with a 3mm (1/8") flat blade screwdriver.

ATTENTION: Take extreme care not to trap or nick any of the wires which run close to the mounting hole on the bottom right of the Autovend.

2.6. Make sure the Autovend is completely tight to the wall.



2.4.



2.5.



2.6.



3. OPERATIONAL SET-UP

3.1. Fill the columns with consumables

Packet maximum and minimum dimensions						
	Left Column			Right Column		
	Width	Depth	Height	Width	Depth	Height
Maximum	108mm	75mm	38mm	130mm	75mm	38mm
Minimum	60mm	45mm	10mm	75mm	45mm	10mm

✓ **DO:** Stack the packets into the appropriate packet columns. The bottom pack must push the level on the switch to the right side of the column to indicate that stock is present.

✗ **DO NOT:** Use squashed, bent or imperfect packets, or over fill the columns, as this could cause packs to jam during delivery.

3.2. Check height setting of Pack Hold-up Lever

The Pack Hold-up Lever is a part of the Autovend located vertically at the front of the products and its function is to grab the second packet while the first is being dispensed. Make sure this piece is in the right position as below (picture on the right), if not move it with your fingers up or down to achieve the required position. If the holdup is not in the right position two products could be dispensed at once.



3.3. Sit the Cash Box

There is one cash box in the Autovend, located in the centre of the machine



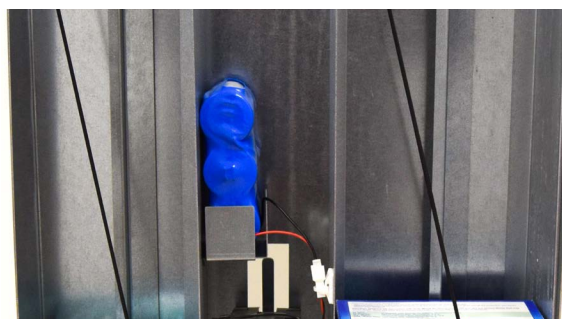
DO: Make sure the Cash Box sits perfectly on tray and the flap is at the front keeping box secure.



DO NOT: Sit the Cash Box leaving space between the tray and the box.

3.4. Connect the battery

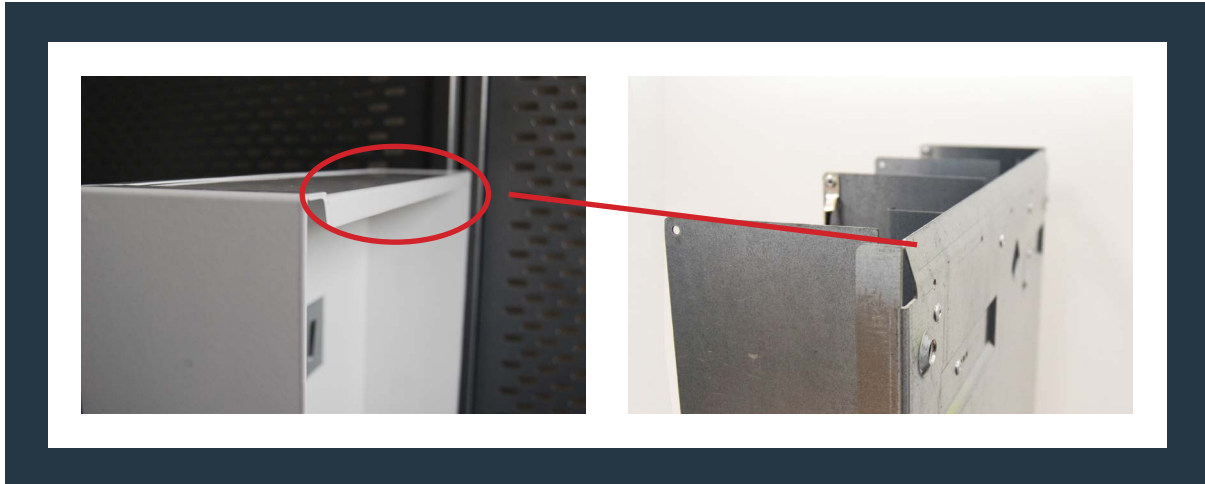
There is only one battery connection point in an Autovend which is located above the coin track as shown in the image below. The power pack should be placed on the tray above the coin track and plugged in to the nearby connector. Please note there is one power pack per machine, as this is all that is required for an Autovend to operate.



Connect and sit the power pack on the battery tray located between the two columns of the Autovend.

3.6. Fit the cover

First, attach the top of the cover by slotting the circled lip over the top of the lip on the back of the body as shown in the image on the right. Ensuring that this is done correctly, and not in front of or behind this gap, will allow the cover to be closed properly.



ATTENTION: If you don't sit the cover correctly, this may cause the lock not to align the locking bar or it could result in the lock being too tight and as a consequence, make it difficult and hard to lock and unlock the machine.



3.7. Lock the machine

When the cover is properly seated within the lip, it matches the locking bar. Then you will need to screw the lock until the cover is tight to the machine, twisting it at least 4 times.

ATTENTION: The lock doesn't fit immediately in the locking bar therefore, there is a gap at the bottom between the cover and the machine. **Do not try to push the cover towards the machine.** As you twist the lock, the cover will go itself closer to the machine until it is completely locked.

4. Fitting And Adjusting For Non Standard Packets

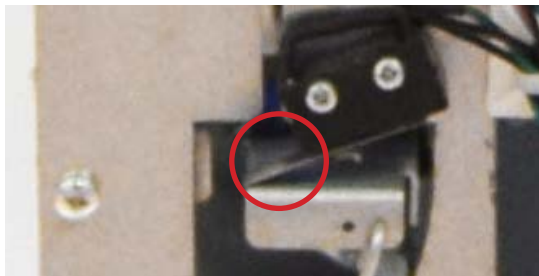
Stock columns are set during manufacture for the designed stock packet size. The standard dual column configuration has a towel packet to the left and a tampon packet to the right. An adjustable pack adapter plate can be supplied for non standard pack size by contacting us directly.

5. There is no product or cash on the autovend and the motor is constantly running:

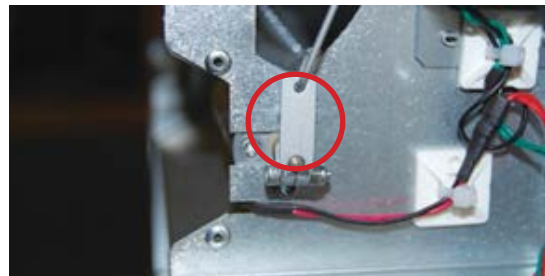
The micro-switch bracket needs adjusted. This may occur in transit if the machine has travelled a long distance.

How to solve this?

Use a pair of pliers to bend the pack tray switch shown in the image below so it is activated by the pack tray as it comes back to it's highest position (rotor arm at 12 o'clock position).



Use pliers to bend switch



Rotor Arm at 12 o'clock position

6. The Autovend is vending all products in the machine until the switch is no longer activated/there is no product remaining:

If the coin did not drop, it is possible that it is jammed in coin track.

How to solve this?

Visually check if there are any coins stuck in the coin track and carefully remove.

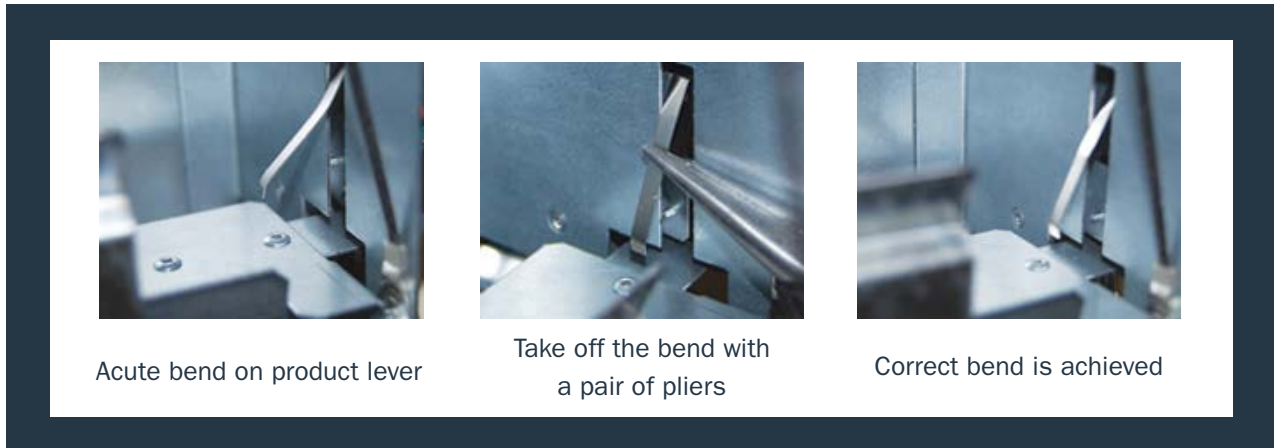
USEFUL INFORMATION

7. The product does not fall, but the coins do:

The product lever that activates the vending function could be over bent, therefore not allowing the product to fall.

How to solve this?

Use a pair of pliers to take the acute bent off the product lever. You should be able to hear a click noise when the product lever is activated.



8. The money keeps being returned

The coin track is designed to stop incorrect sized coins being forced/spun at speed past the coin gate and on into the coin track. The entrance to the coin track is angled so the coin is directed towards the coin gate each time. If the coin is forced into the Autovend at speed it may be directed out through the coin gate and returned to the user. Please take care when inserting coins.

9. The money and the products are in the machine but it does not vend.

The coins may be stuck in the coin track or there may be a loose connection between the connectors.

How to solve this?

Visually check if there are any coins stuck in the coin track and carefully remove. Check all wiring connectors are securely fixed together across the machine.

10. Dispenser completely inoperative:

1. The power pack might be exhausted: Replace complete sealed pack or individual batteries in battery holder.
2. One of the micro-switches is not making a positive contact: Check all micro-switches and adjust micro-switch lever if necessary (using fine nosed pliers). Check all wiring connectors are securely fixed together across the machine.

11. One column only or two column dispenser inoperative

1. Inter: connect loom connector undone – re-connect.
2. Check pack detection micro-switch: Adjust if necessary.

USEFUL INFORMATION

12. Dispenser vend with the incorrect number of coins

1. Check and if necessary re-set the position of the coin contact spring in the Coin Sorter by adjusting the height.

13. Coins jammed in Coin Sorter

1. Carefully clear with wire.

14. Refund system does not return held coin(s)

1. Check if the refund button on the cover is activating the refund flap on the coin track properly. This allows the coins to fall out the back of the coin track and into the product tray to be collected.

15. Lock stiff or inoperative

1. Make sure the cover sits properly (see section 3.6.Fit the cover)
2. Key turns anti-clockwise and if lock is overtightened, use force to open lock. Once open use light grease on lock nut and lock stud.
3. Replace the lock if necessary.

16. SERVICE REPLACEMENT SPARE PARTS

Battery Holder – Includes three of “D” Alkaline Cells

Lock and Key – State lock type

Master Key – State Lock Type

Adjustable Pack Adapter plate

17. AUTOVEND AND THE ENVIRONMENT

Contamination

No contamination is emitted during the vend cycle or at any other time. Unicorn Hygienics recognizes the threat posed to our environment by the industrial use of hazardous materials. It is in this spirit that we fully support the efforts of the European Union to control the use and disposals of these materials as documented in their RoHS legislation. Therefore, Unicorn Hygienics is happy to declare that thier Autovend product (and all other EE products) fully comply with the European RoHS directive 2002/95/EC.

Waste production and disposal

The dispenser produces no waste material during the operation. The products vended by the machine should each be considered on their individual merit in this context. The machine contains no hazardous materials and can be disposed of by any normal industrial waste equipment facility.



Unicorn Hygienics

One of the Unicorn Companies

Unicorn Hygienics Limited

1 The Green, Tullynacross Road, Lisburn, BT27 5SR, Northern Ireland, UK

UK Tel: +44 (0) 28 9264 0827 **Email:** info@unicorn-hygienics.com

www.unicorn-hygienics.com

Stay connected on:

